

48001456

AFN
acessórios 4x4



Checklist / Manual de Montagem - Pára-choques c/ base guincho; s/Envol ; c/ furação f.n.

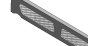


Checklist / Fitting Instructions - Front Winch Bumper;black.p.c.steel;w/ fog light support;without grille guard



Despiezas / Instrucciones de montaje -



| | | | | | | | |
|--|---|--|---|--|---|---|---|
| 1 x1 47001031 |  | 2 x1 47001030 |  | 3 x1 47001029 |  | 4 x1 47000998 |  |
| 5 x1 47000995 |  | 6 x1 47000994 |  | 9 x1 46003521 |  | 10 x1 46003520 |  |
| 11 x2 45000104 Prf. Sx. M12x30x1,25 |  | 12 x10 45000067 Prf. Cb. Sx. M12X35 |  | 13 x4 45000066 Fêmea Freiada M12 |  | 14 x2 45000048 Anilha M8x16x1,6 |  |
| 15 x16 45000042 Anilha M12 |  | 17 x8 45000039 Anilha M10 |  | 18 x4 45000017 Fêmea Freiada M10 |  | 19 x4 45000015 Prf. Cb. Sx. M10x25 |  |
| 20 x2 45000008 Prf. Cb. Sx. M8x30 |  | 21 x10 45000462 prf |  | 21 x10 45000044 Anilha aba larga M6 |  | 22 x10 45000074 Fêmea Freiada M6 |  |

Toyota Land Cruiser
150 3P (09-)



AFN
acessórios 4x4

AFN
acessórios 4x4

Acessórios: ___ / ___ / ___ | Peças/Compostos: ___ / ___ / ___ | Artigo: ___ / ___ / ___ | Embalagem: ___ / ___ / ___

1



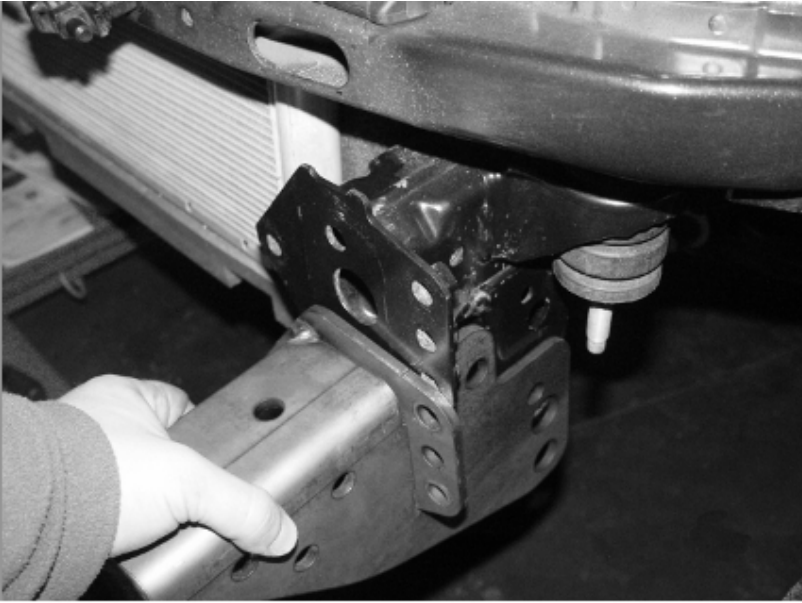
2



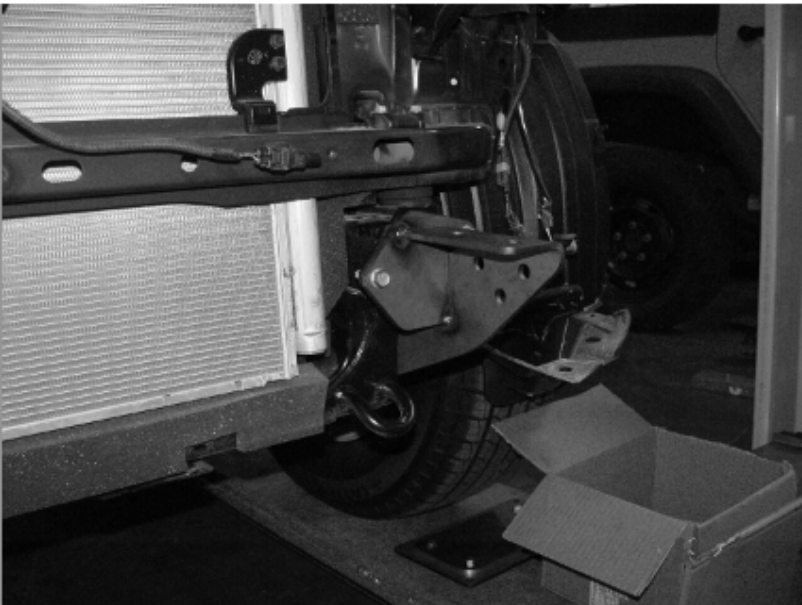
3



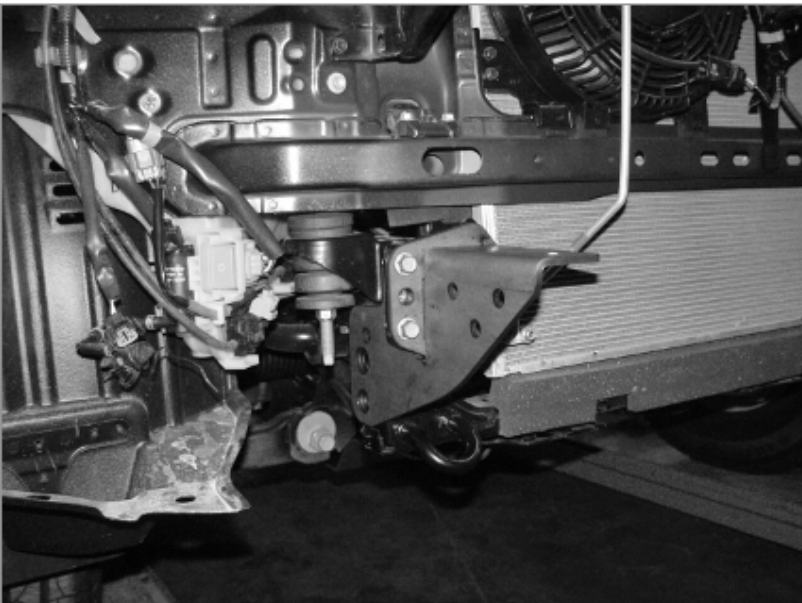
4



5



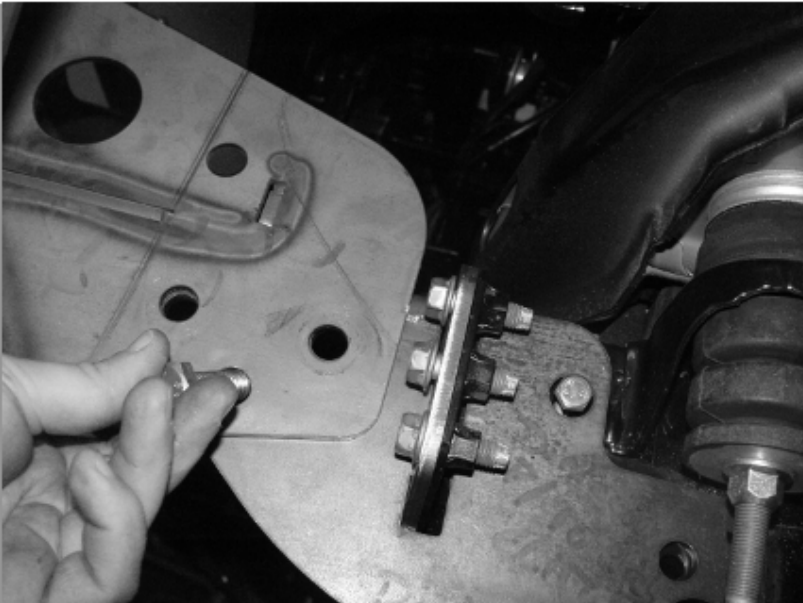
6



7



8



9



10



11

