

# 48002104

**AFN**  
acessórios 4x4



Checklist / Manual de Montagem - P.Choques da frente - Toyota land cruiser 150 - Faróis de nevoeiro incluídos



Checklist / Fitting Instructions - Bull bar Toyota Prado 150 - fog lights included



Despiezas / Instrucciones de montaje -



<b>1</b> x8 48002121		<b>2</b> x1 47001594		<b>3</b> x1 47001510		<b>4</b> x1 47001509	
<b>5</b> x1 47001492		<b>6</b> x1 47001491		<b>7</b> x1 47001490		<b>8</b> x1 46005525	
<b>9</b> x1 46005524		<b>10</b> x1 46005438		<b>11</b> x1 46005437		<b>12</b> x2 46005415	
<b>13</b> x13 45000775 Prf. Cab. Red. M6x20		<b>14</b> x4 45000476 Anilha aba larga M5		<b>15</b> x2 45000402		<b>16</b> x4 45000186 Prf. Sx. M12x25x1,25	
<b>17</b> x2 45000145 Prf. Cab. Red. M5x15		<b>18</b> x4 45000042 Anilha M12		<b>19</b> x14 45000039 Anilha M10		<b>20</b> x6 45000007 Prf. Cb. Sx. M10x30	
<b>21</b> x4 45000058 Prf. Cb. Sx. M8x20		<b>22</b> x8 45000048 Anilha M8x16x1,6		<b>23</b> x4 45000018 Fêmea Frejada M8			

Toyota Land Cruiser  
LJ150 5 Doors (2014- )



**AFN**  
acessórios 4x4

Thank you for choosing AFN products, a lot of time in R&D has gone into perfecting our products. However, if you find problems with any AFN products you have purchased, or if you have any information which would help us to improve our products, please let us know.

If you think there may be a problem either before or after fitting the AFN product, it is best to contact your nearest AFN distributor.

## **WARNING**

- This product should be installed as demonstrated in the product fitting instructions.
- If verified that any component is damaged, please contact your nearest AFN distributor.
- The specified parts, will only fit the models specified by AFN.
- Do not modify any component of the product.
- It is recommended that this product is installed by specialised and trained personnel.
- AFN cannot be responsible for any changes made by the vehicle manufacturer.
- Work safely and use specialised tools at all times.
- Always use protective gear.



size	Torque Nm	Torque lbft
M6	9Nm	4 lbft
M8	22Nm	16 lbft
M10	44Nm	32 lbft
M12	77Nm	57 lbft

### - Tools set required:



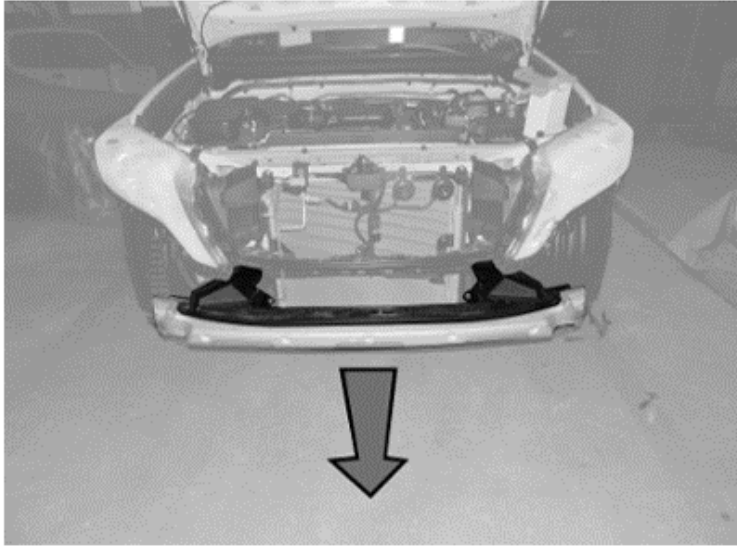
#### **CONTACTS**

R. da Madeira, nº 113  
Z. Industrial das Travessas  
3700-176 S. João da Madeira  
Portugal

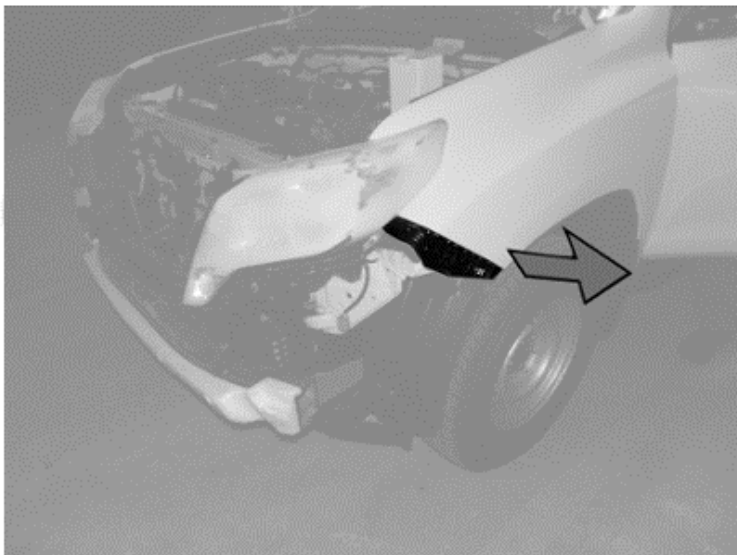
Tel.: (+351) 256 838 300  
Fax: (+351) 256 838 305  
www.afn.pt  
geral@afn.pt

#### **COORDINATES**

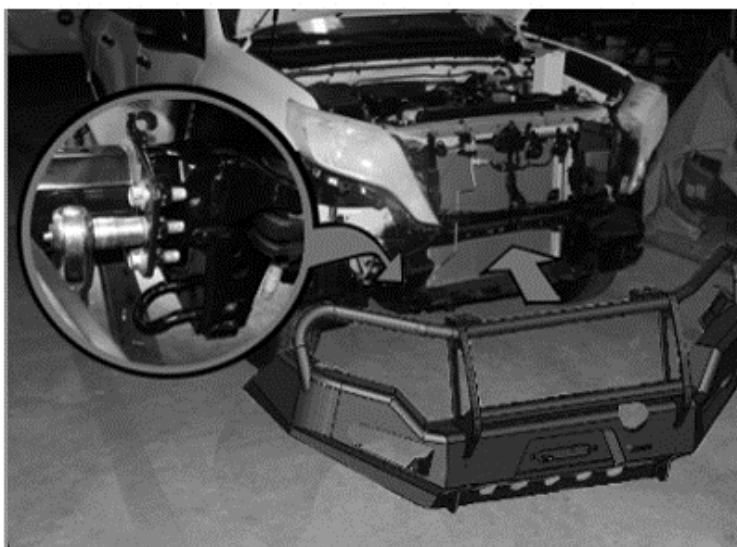
DATUM: European 79  
UTM 05.44.100  
29T 45.28.300  
N 40°54' 14.0"  
W 08°28' 35.0"

**01**

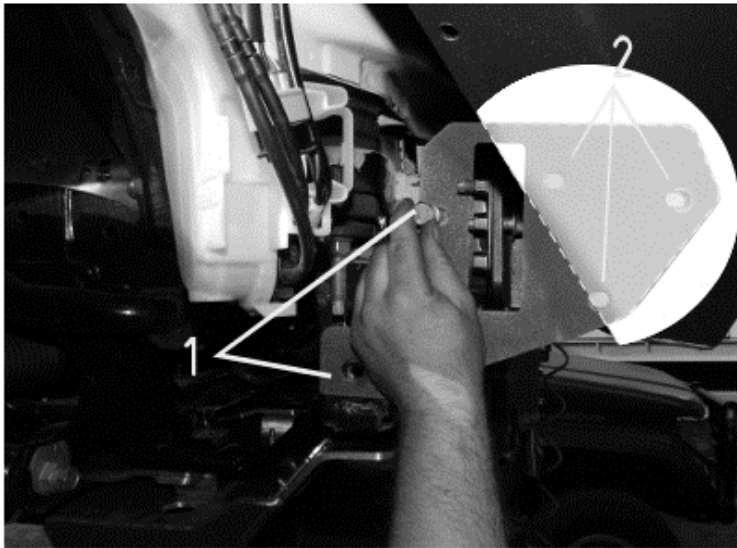
- Before assembling the AFN bull bar, please remove the OEM bumper,
- Also remove OEM grille

**02**

- Also remove the side plastics that hold the OEM bumper on the side wings.

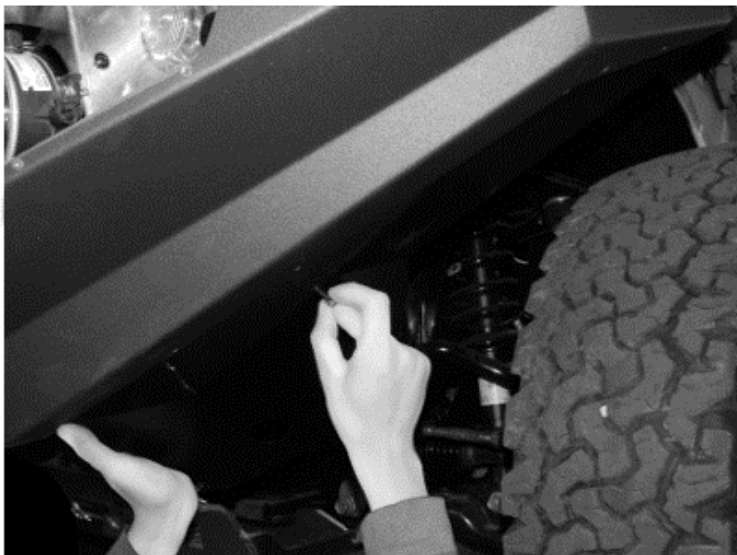
**03**

- After removing the OEM parts please fit the part number 47001490
- Use the OEM bolts with the supplied washers. 45000010
- Make sure the OEM nuts are in good condition.
- Make sure you leave enough gap between the body and the bull bar.

**04**

- After fitting the AFN bull bar please fit part number 46005415 together with

1-45000042/45000186  
2-45000039/45000007

**05**

- Fit the part number 47001492

- Bolts needed  
45000775

**06**

- Please fit part number 47001594 (skid plate)

-Bolts needed  
45000775

07

